

304 & 316 Stainless Steel Enviroline® Series Junction Enclosures with Viewing Window

Application -

Designed to house electrical controls, instruments and components that require unrestricted viewing of the gages or controls, in areas, which may be regularly hosed down or are in very wet or oily conditions. Provides a degree of protection from dust, dirt, oil, and water. For outdoor application a drip shield is recommended. For installation information, consult our Installation Manual at www.saginawcontrol.com.

Construction -

- 0.063" stainless steel Type 304 & 316/316L.
- Seams continuously welded and ground smooth.
- Flange trough collar around all sides of door opening.
- Oil-resistant gasket.
- 0.25" polycarbonate viewing window.
- Standoffs provided for mounting optional sub-panels.
- Removable hinge.
- Doors open 180 degrees.
- Black mini quarter turn latches.
- Latches are opened or closed with a screwdriver.
- Sealing washers and hole plugs included.
- Ground stud on door & body.
- Mounting feet included.
- Optional latches available.

Finish -

#4 brushed finish on all exterior surfaces. Optional panels are powder coated white.

Notes -

Recommend use as Type 3R rating in full outdoor exposure and extreme weather environments.

For more details see *Design Considerations When Specifying Your Enclosure* on our website.

IS6 - Industry Standards -

NEMA Type 3R, 4, 4X, 12 & Type 13
UL Listed Type 3R, 4, 4X & 12
CSA Type 3R, 4, 4X & 12
IEC 60529 IP66

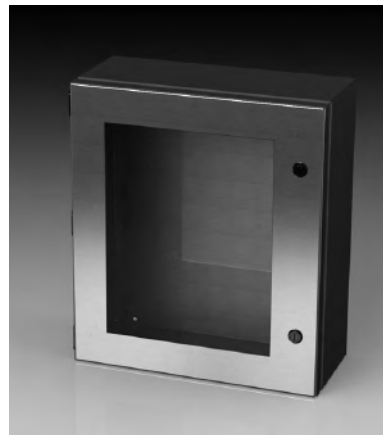
***Special Instructions apply for IS3, IS4 and IS6 to maintain the environmental rating of Type 3R for these parts. See the Special Instructions on the Industry Standards page in the Technical Information Section.

304 Stainless Steel Enviroline® Series Junction Enclosures with Viewing Window

ENCLOSURE PRODUCT CODE S6							SUB-PANEL (P3)	
Catalog No.	Height (A)	Width (B)	Depth (C)	Window Viewing Size	Industry Standard	List Price	Catalog No.	List Price
SCE-1008ELJWSS	10.00	8.00	4.00	6.00 x 3.375	IS6	359.33	SCE-10P8	5.70
SCE-10086ELJWSS	10.00	8.00	6.00	6.00 x 3.375	IS6	378.97	SCE-10P8	5.70
SCE-1210ELJWSS	12.00	10.00	6.00	8.00 x 5.375	IS6	418.25	SCE-12P10	7.72
SCE-12108ELJWSS	12.00	10.00	8.00	8.00 x 5.375	IS6	432.12	SCE-12P10	7.72
SCE-1614ELJWSS	16.00	14.00	6.00	12.00 x 9.375	IS6	563.84	SCE-16P14	19.95
SCE-16148ELJWSS	16.00	14.00	8.00	12.00 x 9.375	IS6	597.34	SCE-16P14	19.95

316 Stainless Steel Enviroline® Series Junction Enclosures with Viewing Window

ENCLOSURE PRODUCT CODE S7							SUB-PANEL (P3)	
Catalog No.	Height (A)	Width (B)	Depth (C)	Window Viewing Size	Industry Standard	List Price	Catalog No.	List Price
SCE-1008ELJWSS6	10.00	8.00	4.00	6.00 x 3.375	IS6	431.20	SCE-10P8	5.70
SCE-10086ELJWSS6	10.00	8.00	6.00	6.00 x 3.375	IS6	454.77	SCE-10P8	5.70
SCE-1210ELJWSS6	12.00	10.00	6.00	8.00 x 5.375	IS6	501.91	SCE-12P10	7.72
SCE-12108ELJWSS6	12.00	10.00	8.00	8.00 x 5.375	IS6	518.54	SCE-12P10	7.72
SCE-1614ELJWSS6	16.00	14.00	6.00	12.00 x 9.375	IS6	676.60	SCE-16P14	19.95
SCE-16148ELJWSS6	16.00	14.00	8.00	12.00 X 9.375	IS6	716.81	SCE-16P14	19.95

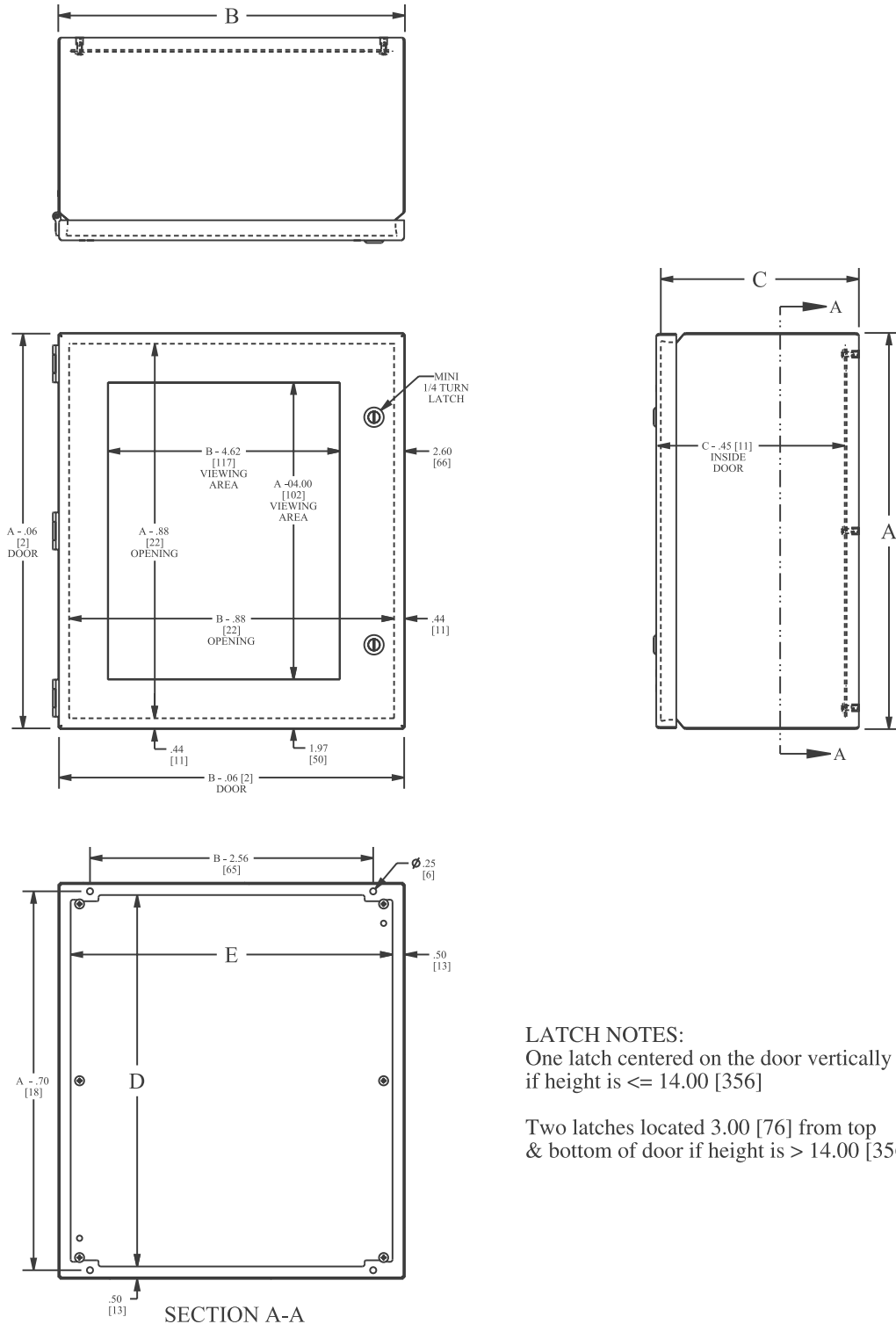


Phone (989) 799-6871
Fax (989) 799-4524



STAINLESS STEEL ENVIROLINE® SERIES JUNCTION ENCLOSURES WITH VIEWING WINDOW

TECHNICAL DATA



LATCH NOTES:

One latch centered on the door vertically if height is ≤ 14.00 [356]

Two latches located 3.00 [76] from top & bottom of door if height is > 14.00 [356]